
Pacific Northwest Sculptors

March 2007

Promoting the Art and Appreciation of Sculpture

www.pnwsculptors.org

PRESIDENT'S MESSAGE:

Dear Sculptors

It seems appropriate at this time just following the annual meeting to acknowledge those who have contributed time and funds to this organization that go far beyond the call of duty.

Maria Wickwire - former newsletter editor, secretary and our short and long term memory. She has done so while dealing with matters that would have stopped any mere mortal cold. She is our hero.

Carole Murphy who has hosted many of our board meetings, chairs our volunteer committee and is constantly on the lookout for new opportunities for us; the latest is an artist exchange with Ireland and Scotland.

Patrick Gracewood who is our new newsletter editor and what a big job that is.

Tamae Frame who gets it to us

Phil Seder our VP who facilitates our most critical meetings and makes us look professional in many ways

Rick Gregg who organizes our studio meetings and more, is just plain there for us.

Julian Voss-Andrea our stalwart treasurer who handles our finances and books and having done that myself I can testify to what a relief that is.

Eben Gramer and Mike Magrath who have put so much effort into the Seattle Chapter

Susan Levine who is our new Shows Committee chair and who is making things happen

Ann Fleming, co-chairing our points committee with Carole Murphy. Ann also brings her experience as president of OPA and revamping their points system to our board.

Paige Lambert our grant writer who did our last grant application while on the road in Guatemala and Mexico. Next time we'll give her more than 5 days notice.

Linley Schetky who has compiled a list of our entire structure, each and every job within it and what it takes to execute that job.

Rick Gregg, Glen Enright, and Lawrence Morrell for the work on the brochure.

Carole Murphy, Rick Gregg and Phil Seder for their work on the skills database

Lastly to Leland Waltuck for putting his heart and soul and his pocketbook into the ISI. We will rise again.

At the annual meeting, MJ Korieva, director of the Coos Art Museum invited us to participate in an exhibition at that museum to be mounted in February of 2009. It will stay up until April 18th. The Coos Art museum is the second largest in Oregon and hosts the largest collection of Northwest sculpture in the state. Jurying will be a joint effort between the Coos Art Museum and Pacific NW Sculptors. Other NW sculptors particularly in the south coast area will be invited by the museum giving us a chance to meet them and have them introduced to our organization. This will be a major exhibition for us. What media will be featured is yet to be determined. I do know they are hosting a wood sculpture exhibition very near to that time so wood sculpture will be excluded.



PNS

to show with the
Creative Metal
Arts Guild, Potters
and other Guilds
May 4-6 at the
Portland
Convention
Center.

Contact

Susan Levine
susan@metalurges.com

Mission Statement

Pacific Northwest Sculptors is a regional nonprofit 501(c)(3) organization of sculptors and affiliates promoting the creation and appreciation of sculpture.

PNS supports members' career development by sponsoring educational programs, exhibition opportunities, and peer exchange of skills and ideas through regular meetings in artist's studios.

You wood folks may want to check their website to find current information on that. More information will be forthcoming as we put this together but for now you may want to visit coosart.org. Check the main gallery, that's where we'll be.

continued on page 2

PRESIDENT'S MESSAGE:

continued from page 1

Phil Seder discussed our skills database and was able to add a bit to it. If you don't know that is, it's a listing of members skills they are willing to share and those they might want to learn. It's easy to see how such a list might be useful when it comes to scheduling workshops or finding volunteers to help in a specific area and learn a vital skill at the same time. To fill one of Phil's database forms email him at art@philsederstudios.com

Susan Levine announced an upcoming show for us at the Gottlieb Gallery as well as speaking on the upcoming CMAG show. If memory serves, we have 10 or so participants. There is information on that elsewhere in the newsletter and any updates on that or the Gottlieb show I will send by e-mail. Contact Susan at susan@metalurges.com or 503-230-0588



The annual meeting was held at Marty Eichinger's studio in Portland, OR

Bonnie Meltzer also spoke about the Portland Studios tour and handed out a call to artists. You may also access that at: portlandopenstudios.com. The deadline is March 15th.

If you are not on my email updates list you may email me at gheath6006@aol.com. Anything critical will also appear in the newsletter so fear not if you still use parchment and a quill.

Carole Murphy talked a bit about the sculptor exchange program she is coordinating. Contact her if you would like to live in Scotland or Ireland for a bit or host a Scot or one of the Irish here. Coordination with nearby galleries would be a part of the program for visiting artists in either direction. Contact Carole at 503-235-7233 or sculptor@carolemurphy.com

The International Sculpture Center sent us some copies of their recent issue which were scooped up quickly. They have also offered our members a discount on membership. Members receive a Sculpture magazine carrying additional information on show and exhibit opportunities as well as other benefits of membership. See pnwsculptors.org/discounts.htm to download a copy of the discount coupon.

I spoke a bit about the Maryhill event but mostly to mention that I have posted information on our website concerning that event at pnwsculptors.org/maryhill2007.htm. We are in need of 10' x 10' canopies. We have a lot of space to fill and if we can avoid the expense of renting those it will help keep our costs to a minimum.

As for the election results our new and returning board members are: Tim Tanner, George Heath, Patrick Gracewood, Susan Levine and Phil Seder. Jim Callentine was forced to withdraw due to pending business obligations.

Particular thanks to Rebecca Iglesias and her crew who provided homemade, tortillas, shredded chicken done to a T and a really good mole sauce to go with it. Thanks also to the rest of you who provided dishes. What a feast. Thanks again to Marty who, once the official part was over announced his beer tap was open. I think we drained that in record time and cleaned out his fridge as well.

And thanks to you all, this is going to be a great year.

George

Pacific Northwest Sculptors

2007 Board of Directors

George Heath (503) 777-2769 gheath6006@aol.com	Carole Murphy (503) 235 7233 sculptor@carolemurphy.com
Rick Gregg (541) 905-6046 rickgregg@centurytel.net	Phil Seder (503) 750-6465 art@philsederstudios.com
Paige Lambert (503) 636-9840 yayip@msn.com	Linley Schetky (503) 650-0055 schetkyL@aol.com
Maria Wickwire (503) 244-0744 maria@palensky.com	Tim Tanner (503) 647-2392 timvic@ipns.com
Susan Levine 503 230-0588 susan@metalurges.com	Ann Fleming afpottery@comcast.net
Julian Voss-Andreae 503-331-2309/503-577-1979 julianvossandreae@hotmail.com	Brandis Svendsen brandis@u.washington.edu

PNS Officers

PRESIDENT George Heath	VICE PRESIDENT Phil Seder
SECRETARY Maria Wickwire	TREASURER Julian Voss-Andreae

Committees

Membership & Website

George Heath
(503) 777-2769
gheath6006@aol.com

Members' Educational Forum

Patrick Gracewood, Chair
(503) 235-7030
pmg@gracewoodstudio.com

Fundraising

Paige Lambert
(503) 636-9840
yayip@msn.com

Events

Jackie Woodward, Chair
(503) 681-8825
jackie@jackiearts.com

Newsletter & Calendar

Patrick Gracewood, Editor
(503) 503 804 3170
pmg@gracewoodstudio.com

Marketing

Phil Seder, Chair
(503) 750-6465
art@philsederstudios.com

Meetings & PNS Graphics

Rick Gregg, Chair
(541) 905-6046
rickgregg@centurytel.net

Finance

Julian Voss-Andreae
503-331-2309/503-577-1979
julianvossandreae@hotmail.com

Educational Outreach

Co-chairs:
George Heath (503) 777-2769
Rick Gregg (541) 905-6046

Volunteer Coordination

Carole Murphy
(503) 235-7233
sculptor@carolemurphy.com

Marketing

Phil Seder, Chair
(503) 750-6465
art@philsederstudios.com

Publicity

Lawrence Morrell, Chair
(971) 235-5378
lmorrell@comcast.net

Publicity

Lawrence Morrell, Chair
(971) 235-5378
lmorrell@comcast.net

Meetings & PNS Graphics

Rick Gregg, Chair
(541) 905-6046
rickgregg@centurytel.net

PNS show chair

OPEN

Show committee chair

Susan Levine
(503) 230-0588
susan@metalurges.com

Dates to Remember

March 2 Form-Space-Light Gallery 6:00 pm- 9:00 pm
619 North 35th St., Seattle, WA 98103
Contact John Parkinson (206) 545-6974

Seattle's Form-Space-Light Gallery will have a silent sculpture auction on March 2, as part of the Fremont art walk. The event will run from 6:00 pm - 9:00 pm. Complimentary wine tasting and review of the works until 7:30pm. From 7:30 we will start accepting bids and will close the bidding at 9pm. We will immediately compile the auction results and accept payments and make arrangements for pickup or delivery. We accept cash, check or debit/credit cards as payment. The gallery will be open from 5 pm - 10 pm

March 21 Yoshida's Fine Art Gallery 6:30 to 8:30 pm
206 NW 10th, Portland, Oregon 97209;
Phone: (503) 227-3911

Our **Portland** March meeting will be at the lovely Yoshida Gallery in the Pearl District. It will be potluck but **NO Alcohol**. So bring a different beverage and a dish to share. Please note we begin at **6:30** instead of our usual 7:00 because we must be out and the gallery closed by 9 pm.

Promoting the Art and Appreciation of YOUR Sculpture

Do you have an artist's statement that you're proud of?
Can you or others read it with out gagging or laughing?

One of the best ways to promote your own work is to write about it. How you talk about and present your work is key to helping others understand (and buy) it..

The PNS newsletter is a perfect place for you to begin. Make it a practice of sending in a jpg photograph of your latest work. Include details about the work, size, media, etc, but also tell us why you created it. What inspired you?

Do you have your 30 second speech that tells what you do? And makes us want to know more? You need them. When are you going to take the time to create them? This is a perfect place to practice.

Send to Patrick Gracewood
with **for PNS newsletter** as subject
pmg@gracewoodstudio.com

Shows and Exhibitions

PORTLAND OPEN STUDIOS



Bonnie Meltzer invited PNS members to participate in **Portland Open Studios**, the annual tour of artists' studios in the Portland Metro area every second and third weekend in October. This self-directed tour visits sculptors, photographers, potters, fiber artists, metal smiths, glass blowers and painters of every stripe in their work spaces. The public can step into your studios to see the tools, techniques and learn how you make your art.

Portland Open Studio is a great way to build an audience for your work. While direct sales may not be large for more expensive sculptures, its often works in less direct ways, often resulting in commissions, or purchases by people who become familiar with your work.

Portland Open Studios a nonprofit, volunteer organization. It is funded by participating artists and by the sales of the Tour Guide. It is successful because of the generous support we get from our planning committee, participating artists, businesses and volunteers from throughout the metropolitan Portland area. **2007 Deadline is March 15, 2007.** Portland Open Studios runs **October 13 & 14 Eastside. October 20 & 21 Westside** Online applications at <http://www.portlandopenstudios.com/>

COOS MUSEUM AND PNS PLAN SCULPTURE EXHIBITION



Stone Mama by Joseph Webb
Coos Museum permanent collection

M J Korivea of the **Coos Art Museum** spoke at the Feb. 26 annual meeting about mounting a juried sculpture exhibition featuring work by PNS members..The projected time for the show is within the next two to three years. Works from the museum's permanent sculpture collection would be featured in adjacent galleries of the museum.

Coos Museum, the state's third largest art museum, has a long history of supporting Northwest contemporary art, and works with arts organizations to plan and mount exhibitions. The museum began with shows by the Coos Artist League in 1950, and has over the last 50 years established a reputation for high quality exhibits and educational programs. Throughout this period volunteers were responsible for nearly all Museum operations and functions. The museum is housed in a historical art deco structure built in 1936. After 5 years of hard work - including a door-to-door campaign to inform the community and raise money for much repairs and retrofitting, the Coos Art Museum moved into it's current location in 1984.

Shows and Exhibitions

MARYHILL MUSEUM FESTIVAL OF THE ARTS



PNS participants of the 2005 Maryhill Festival of the Arts

Maryhill Museum Festival of the Arts

PNS will again be headlining this event to be held August 18th and 19th, 2007 at the Maryhill Museum in the Columbia Gorge. It's a beautiful location. Camping on the grounds is available for participants. Click the Maryhill image on the PNS home page for images from the 2005 event.

To participate contact George Heath

gheath6006@aol.com

503-777-2769

Redmond Outdoor Sculpture Call for Regional Artists

The City of Redmond Arts Commission and Independent Curator Jess Van Nostrand seek proposals for the 2007-08 Redmond Outdoor Sculpture Exhibition. Up to fourteen sculptures will be selected. A \$500 honorarium is paid for sculptures suitable for a 15-month long exhibition. Artists must be able to provide their own transportation and do their own installation. Details can be found at www.redmond.gov/arts. Questions can be emailed to rac@redmond.gov.

The deadline is March 16, 2007.

Cracked Pots Edgefield 2007

Susan Levine is organizing a PNS group booth . All pieces must be outdoor, and must use at least 75% recycled materials, and must include a story line with materials used. The show date is July 24-5. A mass e-mail will be going out as a call to artists. Contact: susan@metalurges.com

Gottlieb Gallery Sculpture Show

Gottlieb Gallery sculpture show is scheduled for Oct. and Nov. 2007. It will be juried by the gallery. A mass e-mail will be sent as a call to artists. Contact: susan@metalurges.com

FastForward on Youtube.com

Checkout the BIG ROUND CUBATRON. The BRC is the world's largest 3 Dimensional full color dynamic light sculpture. A creation of Mark Lottor, it is made of over 18,000 LEDs. The sculpture is 40 ft in diameter and 10 ft tall. It's an amazing light show

PNS Member News

OLYMPIC LANDSCAPE SCULPTURE EXHIBITION

Carole Turner received an invitation from Mr. Yuan Wiku of the Beijing Olympic Landscape Sculpture Design Contest to participate in this international event and has been chosen as a finalist.

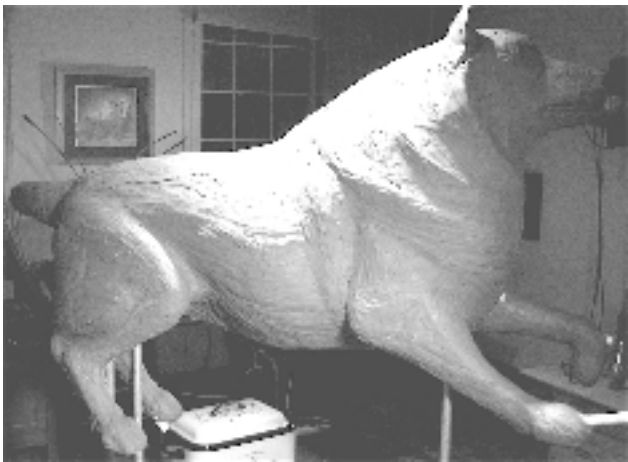
Her sculpture, "Rythmic Dancer," is currently on tour with the Beijing 2008 Olympic Landscape Sculpture Exhibition.

Over 2,600 designs were proposed by artists from 82 countries and Carole is one of the eight sculptors chosen to represent the United States. A prestigious panel of international judges chose 290 semi-finalist sculptures, which were cast in triplicate bronze to facilitate simultaneous exhibition in China, touring 23 major cities.

The viewing public was encouraged to vote for their favorites and in December 2006, 110 finalists were chosen to proceed to the next phase: an international exhibition tour and contention for the 29 gold, silver and bronze Olympic medals to be awarded at the end of 2007. Sculptures to be enlarged and installed at various Olympic venues will be chosen from these finalists as well. Carole is honored to be included among the finalists.



Editor's note: It is remarkable that in a country the size and population of the USA, that a 2008 Olympic juror, Devin Laurence Fields, and a sculpture finalist, Carole Turner, are both from the Pacific Northwest.



PNS member Brandis Svendsen was commissioned by the **University of Washington** to sculpt its' mascot, a Husky. The 1.5 times life sized dog will be sited on the main campus. She has been working on it a couple of months and hopes to have it installed this spring.

What is happening in your studio? Share it with the PNS Community in the newsletter. Send info to pns@gracewoodstudio.com

PNS is pleased to welcome new members, **Jason Johnston and Rob Arp.**

Jason Johnstons a University of Oregon graduate who has returned to Oregon after teaching at the Leelanau School in Glen Arbor MI.

He taught all levels of sculpture, drawing, painting and studio arts. A recent interest is creating videos about art that can be shown on the internet.

Johnston works in a variety of media and styles, from cloistered Academia to figurative bronzes of athletes skiing, snowboarding, white water rafting, etc.

His website is www.jasonjohnstonsculpture.com

Rob Arp, an accomplished sculptor in his own right, helps other artists realize their dream through his business, **ADDITIVESHOP.**

Additive Workshop is a full service digital enlargement and reduction studio capable of creating anything from coin sized reliefs to full scale monuments. Slightly undersized foam armatures allow for a finishing layer of clay.

His website is www.additiveworkshop.com

PNS Classifieds

Victor Daly, Irish Stonecutter, Sculptor with 20 years experience seeks work. All areas of the states considered. Please contact Victor Daly: Tel: no **087/2601177** email **Victor Daly@Eircom.net**

2' X 4' X 3" slabs of autoclaved aerated concrete for sale, \$5.00. Great sculpting material, also good building attributes, works as a sound proofer, insulator, has 1200 psi, yet is 1/5th the weight of cement. This size is perfect for relief sculptures.

Contact: **Kyle 503-892-1963.**

Downdraft Olympic kiln for sale. See on **www.kilns/kilns.com** Model #DD30. 44cubic feet, 42 x 41 x 47 ID. Cone 10 375,000 BTU. **Contact Dennis at 503.260.0127**

Shop People provide work space, tools, and guidance at reasonable price for everyone who dreams of having their own shop. Wood, metal, jewelry, ceramic and glass facilities. Contact **www.the shoppeople.com**

Additive Workshop

Enlargements and Reductions for Sculptors
Rob Arp 503 459 7659

THE STEEL YARD

Is Ready To Serve Your Needs

HOURS 8-5 Monday-Friday • 8-12 Saturday

Retail and Wholesale Distributors of
A Wide Variety of Industrial Products

- ANGLES • CHANNELS • FLATS • STRIPS • ROUNDS • SQUARES
- REBAR • EXPANDED • GRATING • SHEETS • PLATES • BEAMS
- SQUARE, ROUND & RECTANGULAR TUBING • PIPE • MORE!

BUY • SELL • BARTER • TRADE • CONSIGNMENTS TOO!

6880 NE Columbia
Blvd.
Portland, OR 97218
Phone **(503) 282 9273**

P.O. Box 4828
Portland, OR 97208-4828
FAX (503) 282-7490

Member Discounts

Our **Program for Member Discounts** at art suppliers is going very well. We have seven Portland area sculpture and art suppliers for member discounts ranging from 10 to 20%. There are none in the Seattle area as yet.

This needs to be a regional program. So, if you Seattle folks or anyone away from the metro Portland area frequent a supplier, please give us their name and contact information. Carole Murphy will call them and see if we can get our members a discount.

Contact Carole at 503-235--7233 or
sculptor@carolemurphy.com

Your PNS Membership Card can be shown at the following businesses for discounts:

Lash Molds and Sculpture Supplies

4702 NW 102nd Ave Portland
503-251-6959

Columbia Art

1515 E. Burnside, Portland
(503) 232-2216

Georgie's Ceramic and Clay

756 N Lombard St., Portland
(503) 283-1383

Stan Brown Art and Crafts

13435 NE Whitaker Way, Portland
(503) 257-0059

Stephenson's Pattern Supply

3223 NW Guam, Portland
(503) 228-1222

Quimby Welding Supply

(NW Portland and Tualatin)

International Sculpture Center

isc@sculpture.org
www.sculpture.org

MEMBERSHIP APPLICATION/RENEWAL

Pacific Northwest Sculptors invite to you become or continue as a colleague of the society. As a colleague, you have access to all exhibitions sponsored by Pacific Northwest Sculptors, receive monthly notifications of meetings & calls for artists, and a one year subscription to the newsletter. Please fill in the new application form below to receive your 2007 membership.

Colleague (sculptor) dues: \$55/yr., Student dues: \$30/yr., Allied (industry) members: \$100/yr.
Annual dues are due in September. \$5 discount if paid by Sept. 15th. New members are prorated.

Name: _____ Date: _____
Street: _____ City: _____ State: _____ Zip: _____
New Member? Renewing Member? Phone(s): _____
E-mail Address: _____ Website: _____
Sculpture Medium: _____

Which committee(s) will you volunteer for (See p. 2) _____
Do you wish your information to be shared with members in the PNS Directory? _____

Pacific Northwest Sculptors
4110 SE Hawthorne Blvd. #302
Portland, OR 97214
www.pnwsculptors.org